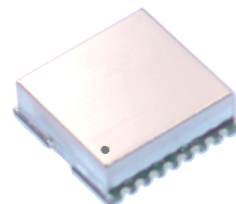


Features

- +3 dBm Output Level at 696.5 MHz
- 2nd Harmonic: < -20 dBc
- Spurious Level: < -75 dBc
- Lock Time : < 10 ms
- 80mA Current Consumption
- Strip-line Resonator

Description

The plerow™ PLL synthesizer module was designed for use in wireless and wireline systems in a wide range of frequency from 50 MHz to 6 GHz. ASB's PLL provides exceptionally low spurious and phase noise performance with fast locking time and low current consumption. All products are available in a surface-mount type package.



Specifications

Parameter	Unit	Min.	Typical	Max.
Frequency Range	MHz		696.5	
Output Power	dBm	+0	+3	+5
Supply Voltage	V	4.75	5.00	
Current Consumption	mA		38	80
Channel Step Size	kHz			
2 nd Harmonics	dBc			-20
Spurious Level	dBc			-75
Lock Time	Ms			
Reference Frequency	MHz		10	
Reference Input Level	dBm	-5	0	5
Phase Noise (C / N)				
@100kHz	dBc/Hz		-72	
@ 1kHz			-85	
@ 10kHz			-105	
@ 100 kHz			-120	
Output Impedance	Ω		50	
Operating Temp. Range	°C	-30	+25	+70
Package Type & Size	mm	SMT, 19.0W×19.0L×5.8H		

1) Measurement conditions are as follows: T = 25°C, V_{CC} = 5 V, Freq. = 450 MHz, 50 ohm system.

More Information

Website: www.asb.co.kr
E-mail: sales@asb.co.kr

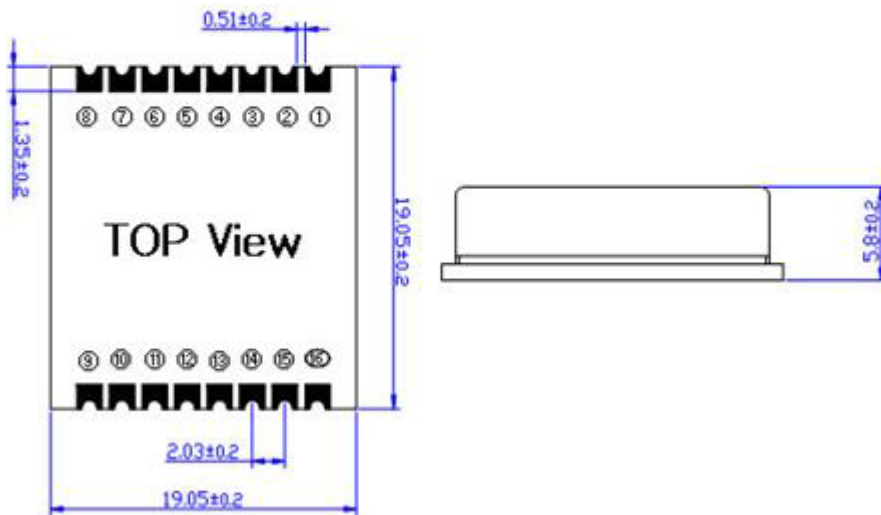
Tel: (82) 42-528-7223
Fax: (82) 42-528-7222

ASB Inc., 4th Fl. Venture Town
Bldg., 367-17 Goijeong-Dong,
Seo-Gu, Daejeon 302-716, Korea

Outline Drawing

APL0000-R Type

Type	Dimension
PLL IC + VCO + ROM	19 x 19 x 5.8



Pin Out for PLL			
Pin No.	Application	Pin No.	Application
1	GROUND	9	VCC (VCO)
2	GROUND	13	RF OUT
3	GROUND	15	VCC (PLL)
4	OSC IN	16	LOCK DETECT
All other Pins are Grounded / Internal ROM			

