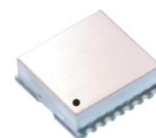


## Features

- 3 dBm Output Level at 2100MHz
- Channel Step Size : 1000 kHz
- 2<sup>nd</sup> Harmonic : < -20 dBc
- Spurious Level : < -65 dBc
- Lock Time : < 10ms
- 30 mA Current Consumption

## Description

The plerow™ PLL synthesizer module was designed for use in wireless and wireline systems in a wide range of frequency from 50 MHz to 6 GHz. ASB's PLL provides exceptionally low spurious and phase noise performance with fast locking time and low current consumption. All products are available in a surface-mount type package.



## Specifications

Parameter	Unit	Min.	Typical	Max.
Frequency Range	MHz		2100	
Output Power	dBm	1	3	5
Supply Voltage	V	4.7	5	5.3
Current Consumption	mA		30	40
Channel Step Size	kHz		1000	
2 <sup>nd</sup> Harmonics	dBc		-25	-20
Spurious Level	dBc			-65
Lock Time	ms		3	10
Reference Frequency	MHz		13	
Reference Input Level	dBm			
Phase Noise (C / N)				
@ 1 kHz			-70	-65
@ 10 kHz	dBc/Hz		-100	-95
@ 100 kHz			-120	-115
Output Impedance	Ω		50	
Operating Temp. Range	°C	-40	25	80
Package Type & Size	mm	SMT, 15.0W×15.0L×3.5H		

1) Measurement conditions are as follows: T = 25°C, V<sub>CC</sub> = 5 V, Freq. = 2100 MHz, 50 ohm system.

## More Information

Website: [www.asb.co.kr](http://www.asb.co.kr)  
E-mail: [sales@asb.co.kr](mailto:sales@asb.co.kr)

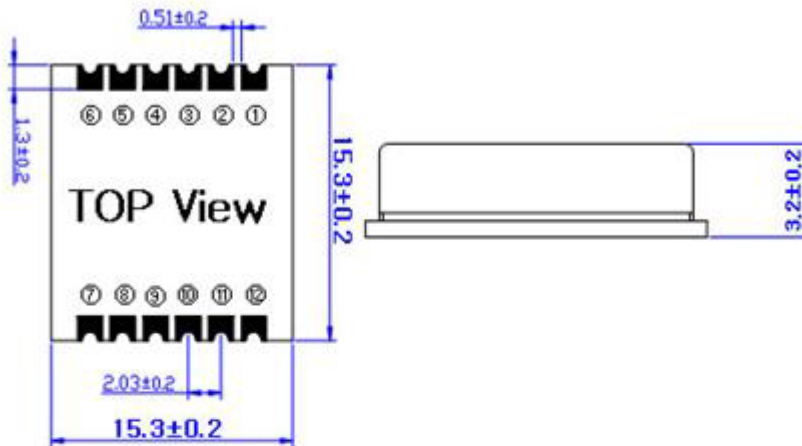
Tel: (82) 42-528-7223  
Fax: (82) 42-528-7222

ASB Inc., 4th Fl. Venture Town  
Bldg., 367-17 Goijeong-Dong,  
Seo-Gu, Daejeon 302-716, Korea

Outline Drawing

APLT0000-R/T Type

Type	Dimension
PLL IC + VCO + ROM + TCXO	15.3 x 15.3 x 3.2



Pin Out for PLL			
Pin No.	Application	Pin No.	Application
1	GROUND	7	VCC (VCO)
2	GROUND	10	RF OUT
3	GROUND	11	VCC (PLL)
4	GROUND	12	LOCK DETECT
All other Pins are Grounded / Internal TCXO and ROM			

